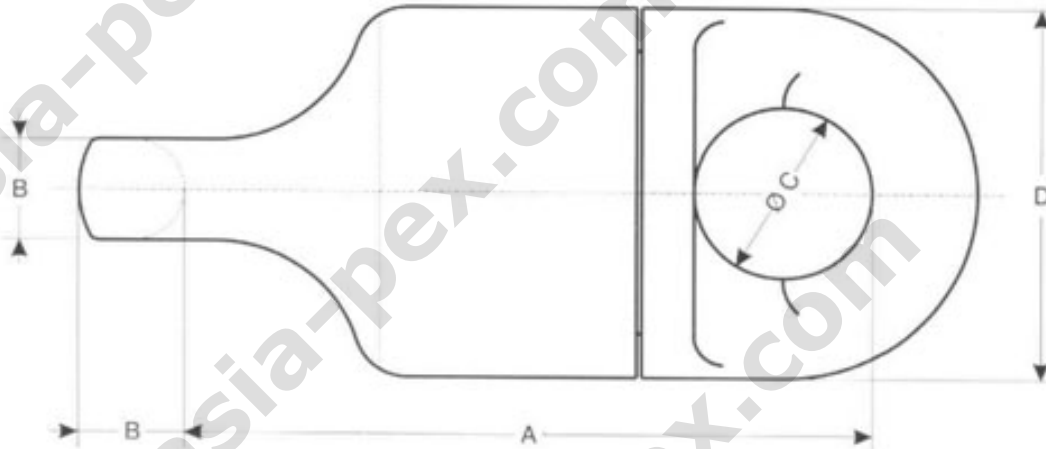


CLOSED SWIVEL



These swivels manufactured only upon request in high tensile material. They are fitted on the chain by means of a Kenter connecting link at both end. They can be provided especially equipped for low torque applications.

Material : High tensile steel.

Same mechanical characteristics as Grade 3

CODE EMF	Calibre de chaîne Chain size mm	A mm	B mm	Ø C mm	Ø D mm	TENSION PROOF LOAD kN	 kg
030 016	16	110	17	28	63	150	2
030 019	19	131	20	34	73	211	3.3
030 020	20.5	141	22	36	81	245	5
030 024	22 - 24	162	26	42	90	280	6
030 028	26 - 28	180	29	47	102	449	9
030 032	30 - 32	215	34	56	123	583	16
030 036	36	234	37	62	140	732	20
030 040	38 - 40	265	43	70	157	896	30
030 046	44 - 46	307	49	80	181	1 170	48
030 050	48 - 50	340	54	89	202	1 370	62
030 056	54 - 56	385	61	100	225	1 710	95
030 064	60 - 64	433	68	112	247	2 200	110
030 066	66	447	71	115	264	2 310	135
030 070	70	471	75	121	280	2 600	149
030 076	76	511	81	132	294	3 010	210
030 080	81	545	86	140	314	3 380	245
030 100	100	678	106	175	393	4 940	400